

Model 18SPC10 - Pilot Operated Valve

3-WAY NC, 1/4" NPT, 150 PSI MAX

The 18SPC10 is a two position, three-way normally closed block and bleed, Pilot Supply pressure operated flow control valve assembly. It is designed to establish Supply to Valve flow automatically with each application of pilot signal pressure. Upon loss of pilot signal, the valve shifts to the supply blocked state.

A loss of operating Pilot Supply pressure will block the Supply (inlet) port and exhaust the accumulated operating pressure within the receiving control circuit.

Automatic Reset Relays or Pilot Operated Valves are generally used in pneumatic safety systems that require control sequencing or fail safe (fail closed) operation.



Flow Control Application: Normally Closed, 3-Way (Block & Bleed)

Operating Pressure: Valve Pressure 150 psi max; Pilot 30 – 60 psi

Seal Material: Viton **Media Service:** Pneumatic or Hydraulic

Connection Size (Body): 1/8" FNPT Pilot port;
1/4" FNPT - Supply, Valve & Exhaust Ports)

Component Material: 316 Stainless Steel,

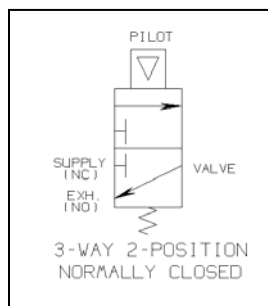
Weight: 1.25 Lbs.

Operating Temperature: -20° F to +250° F

Overall Dimensions: 4.62" L x 1-1/4" Square body

Repair Kit Information

Repair Kits contain all of the Seals and other components typically replaced when repairing the assembly.



Conforms to the SEP category of the European Pressure Equipment Directive Issue No. 97/23/EC