

DUCATI energia	CAPACITOR for POWER ELECTRONIC - GENERAL PURPOSE APPLICATIONS -	C = 50µF 550 Vac / 940 Vdc
S.p.A		Part. Number : 416.84.5264

CHARACTERISTICS

Rated Capacitance	50	µF
Capacitance Tolerance	±5%	
Rated AC Voltage (Urms)	550	V
Rated DC Voltage (Un)	940	V
Maximum Current (Imax) @ θ MAX	24	A
Self-inductance	< 160	nH
Equivalent series resistance (RESR)	< 8	mΩ
Typical tan d (10E-4)	5,0	(Measure @ 50Hz)
Thermal resistance natural cooling (RTHN)	2,0	°C/W

Filler material	Polyurethane Resin
Dielectric	PPM Film
Over pressure safety device	
Aluminium case	
Weight	≤ 500 g

MAXIMUM RATINGS

Over voltage	1.1 Un	8hours/day
Non-recurrent surge voltage (Us)	1800	V
Maximum peak current (IPK)	4	kA
Max. Voltage raise of rise (dV/dt)	75	V/µs
Maximum surge current (Is)	7,0	kA

TEST DATA

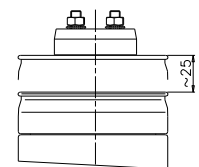
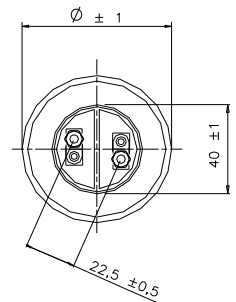
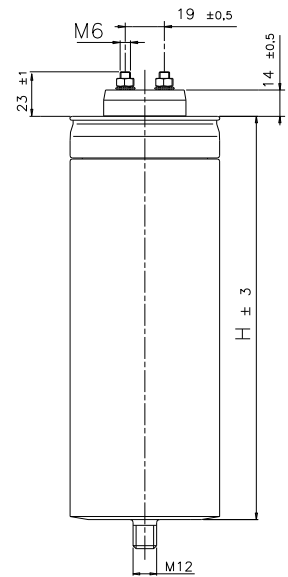
DC Test voltage terminal to terminal	1,5xUn x 10s	Vdc
AC test voltage terminal to case	3kVx 10s	Vac 50Hz

CLIMATIC CATEGORY

Min. operating temperature (θ MIN)	-25	°C
Max. operating temperature (θ MAX) (*)	+85	°C
Max. HS temperature	+85	°C
Storage temperature	-40 +85	°C
Altitude maximum	2000m	a.s.l.

(*) According to table 1 – maximum dissipation power –

Operat. Temp. [°C]	Max. Dissip. Power [W]
65	10
70	7,5
75	5
80	2,5



Dimensioni con sistema antiscoppio attivato
 Dimension with overpressure device activated

Ø [mm]	H [mm]
60 ± 1	150 ± 3

Maximum Fixing Torque for M6 terminals*	3 [Nm]
Fixing Stud	M12
Maximum Fixing Torque for M12 stud	10 [Nm]

DUCATI energia	CAPACITOR for POWER ELECTRONIC - GENERAL PURPOSE APPLICATIONS -	C = 50 μ F 550 Vac / 940 Vdc
S.p.A		Part. Number : 416.84.5264

Failure quota 100/10E9
Expected life time (Ln) 100.000 h @ Urms / 70°C HS
Expected life time (Ln) 50.000 h @ Urms / 80°C HS

Humidity category In accord. with DIN 40040 F
Insulating In accord. with UL 810 / UL 840
Vibration resistance In accord. with EIA STAND.
RS-186-7E

STANDARDS

EN 61071-1/2
UL - CSA approval

Total elongation is about 20 mm after the overpressure disconnecter release. Don't use rigid connections.