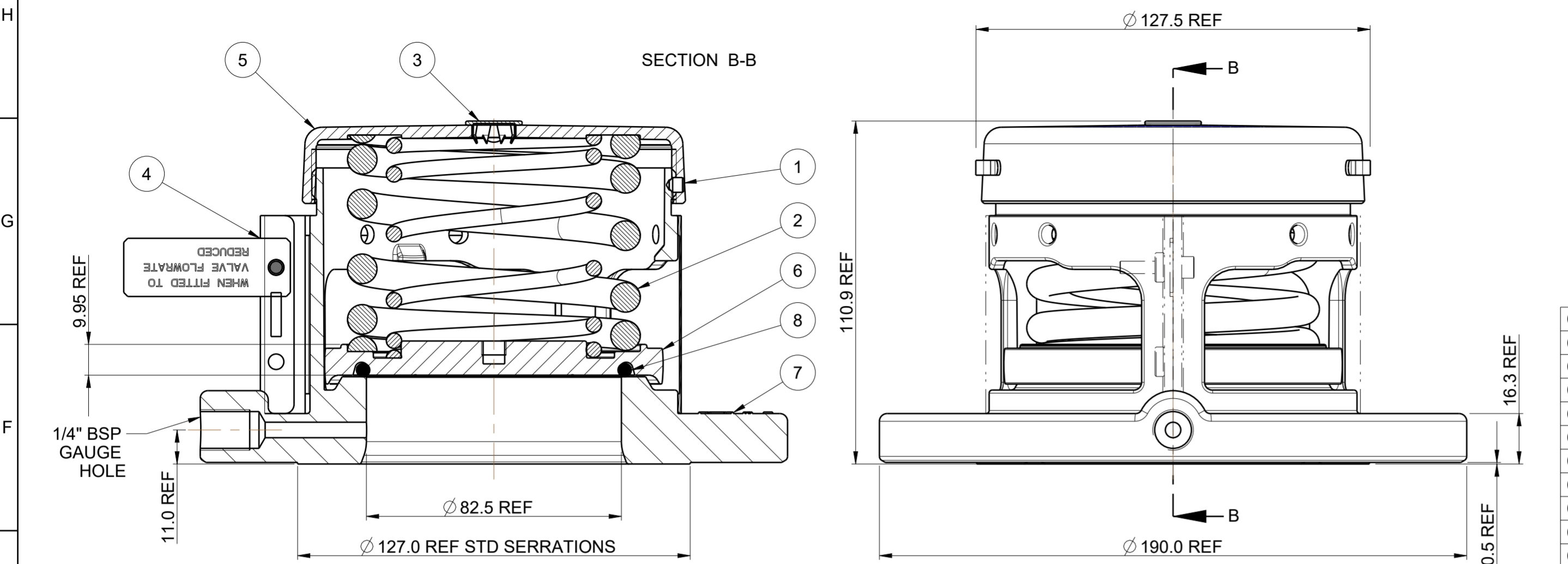


DRAWING STATUS		PRODUCTION	
REVISION	04	SIG	MG
			26-May-17
49PSI OPTION ADDED TO TABLE 1			



OVER 4.827 [70.0]	±3%
3.34 TO 4.827 [48.4 TO 70.0]	±0.138 [2.0]
UNDER 3.34 [48.4]	±0.1 [1.5]
SET PRESSURE RANGE BAR [PSI]	SET PRESSURE TOLERANCE BAR [PSI]
ALLOWABLE SET PRESSURE TOLERANCE TO ASME UG 134(d)(1) AND BS EN ISO 4126-1 2013	

NOTE:
SET PRESSURE TO BE DEFINED AT FIRST BUBBLE

043/X700082S	SPRING PAIR	6109-3050	4.83	[70.0]	5.616	5.79	[84.00]	1860/107764	1860/103864
043/X640082S	SPRING PAIR	6104-0665	4.41	[64.0]	5.205	5.30	[76.80]	1860/107060	1860/100860
043/X630082S	SPRING PAIR	6104-0665	4.40	[63.8]	5.192	5.28	[76.56]	1860/107060	1860/100860
043/X580082S	SPRING PAIR	6104-0600	4.00	[58.0]	4.795	4.80	[69.60]	1860/107064	1860/100864
043/X560082S	SPRING PAIR	6104-0600	3.86	[56.0]	4.658	4.63	[67.20]	1860/107064	1860/100864
043/X550082S	SPRING PAIR	6104-0600	3.79	[55.0]	4.590	4.55	[66.00]	1860/107064	1860/100864
043/X540082S	SPRING PAIR	6104-0570	3.71	[53.8]	4.508	4.45	[64.56]	1860/107060	1860/100860
043/X530082S	SPRING PAIR	6104-0570	3.66	[53.0]	4.453	4.39	[63.60]	1860/107060	1860/100860
043/X520082S	6104-0195	6104-0310	3.59	[52.0]	4.384	4.30	[62.40]	1860/107064	1860/100864
043/X510082S	6104-0195	6104-0310	3.52	[51.0]	4.316	4.22	[61.20]	1860/107064	1860/100864
043/X490082S	6104-0195	6104-0310	3.38	[49.0]	4.179	4.06	[58.80]	1860/107064	1860/100864
043/X480082S	SPRING PAIR	6104-0485	3.31	[48.0]	4.111	3.97	[57.60]	1860/107064	1860/100864
043/X440082S	SPRING PAIR	6104-0485	3.03	[44.0]	3.837	3.64	[52.80]	1860/107064	1860/100864
043/X420082S	6104-0195	6104-0252	2.90	[42.0]	3.700	3.48	[50.40]	1860/107064	1860/100864
043/X400082S	6104-0112	6104-0310	2.76	[40.0]	3.563	3.31	[48.00]	1860/107064	1860/100864
043/X390082S	6104-0112	6104-0310	2.69	[39.0]	3.495	3.23	[46.80]	1860/107064	1860/100864
043/X380082S	6104-0085	6104-0310	2.62	[38.0]	3.427	3.14	[45.60]	1860/107064	1860/100864
043/X370082S	6104-0067	6104-0310	2.55	[37.0]	3.358	3.06	[44.40]	1860/107064	1860/100864
043/X360082S	6104-0067	6104-0310	2.48	[36.0]	3.290	2.98	[43.20]	1860/107064	1860/100864
043/X320082S	6104-0048	6104-0310	2.19	[31.8]	3.002	2.63	[38.16]	1860/107064	1860/100864
043/X300082S	-	6104-0310	2.07	[30.0]	2.879	2.48	[36.00]	1860/107064	1860/100864
043/X290082S	-	6104-0310	2.00	[29.0]	2.811	2.40	[34.80]	1860/107064	1860/100864
043/X270082S	-	6104-0294	1.86	[27.0]	2.674	2.23	[32.40]	1860/107064	1860/100864
043/X250082S	-	6104-0252	1.72	[25.0]	2.537	2.07	[30.00]	1860/107064	1860/100864
043/X220082S	-	6104-0232	1.52	[22.0]	2.225	1.82	[26.40]	1860/107064	1860/100864
043/X200082S	-	6104-0216	1.38	[20.0]	2.095	1.66	[24.00]	1860/107064	1860/100864
043/X180082S	-	6104-0216	1.24	[18.0]	1.964	1.49	[21.60]	1860/107064	1860/100864
043/X150082S	-	6109-0674	1.03	[15.0]	1.768	1.24	[18.00]	1860/107064	1860/100864
043/X110082S	6109-0490	-	0.76	[11.0]	1.507	0.91	[13.20]	1860/107064	1860/100864
043/X090082S	6109-0400	-	0.62	[9.0]	0.508	0.84	[12.15]	1860/107064	1860/100864
043/X070082S	6109-0305	-	0.48	[7.0]	0.451	0.65	[9.45]	1860/107064	1860/100864
043/X050082S	6109-0225	-	0.34	[5.0]	0.384	0.47	[6.75]	1860/107064	1860/100864
043/X040082S	6109-0180	-	0.28	[4.0]	0.344	0.37	[5.40]	1860/107064	1860/100864
043/X030082S	6109-0145	-	0.21	[3.0]	0.299	0.28	[4.05]	1860/107064	1860/100864
043/X020082S	6109-0095	-	0.14	[2.0]	0.245	0.19	[2.70]	1860/107064	1860/100864

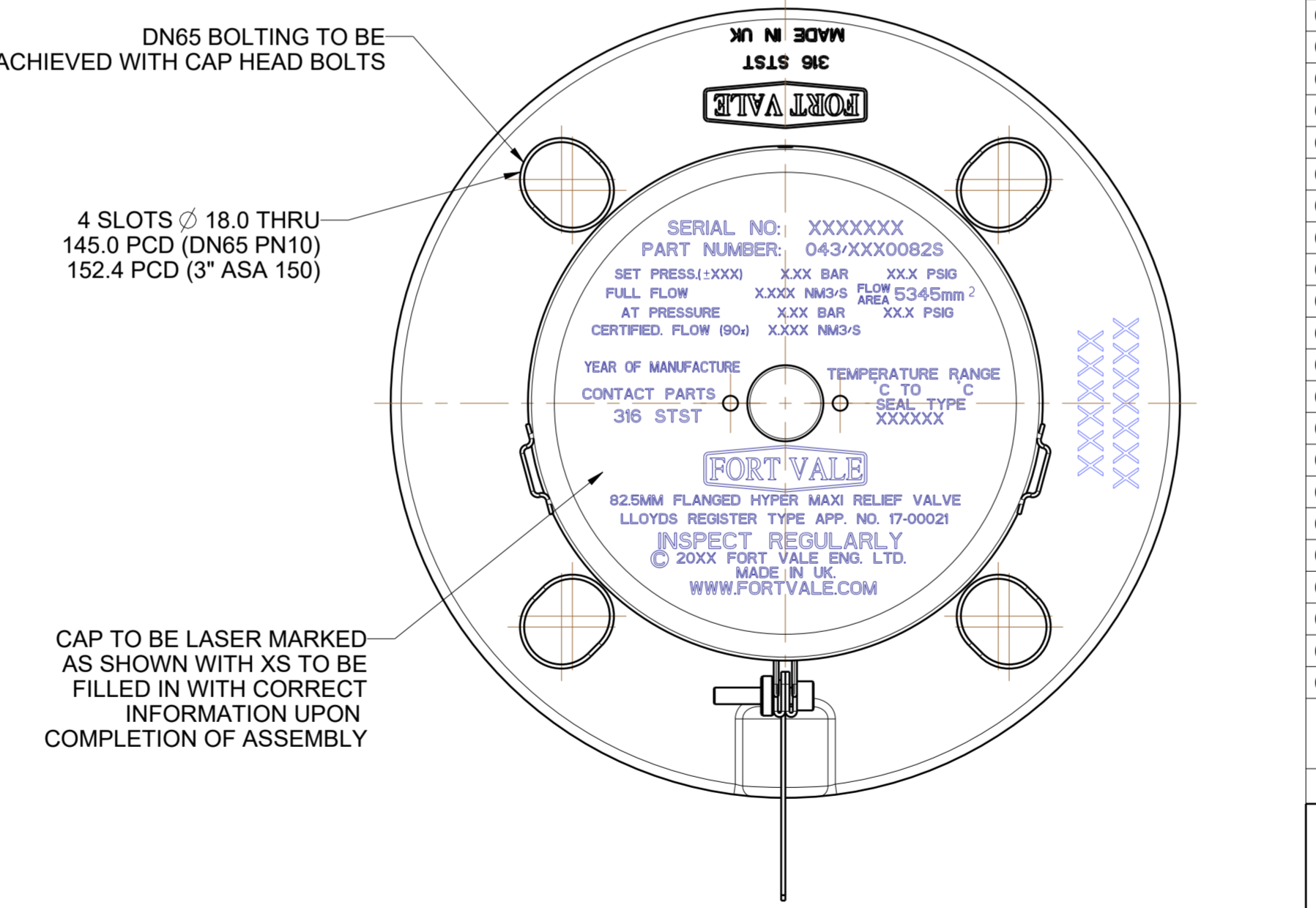
043/1630082S VALVE DENOTES SLOTTED 82.5MM FLANGED HYPER MAXI RELIEF VALVE PRESSURE ONLY WITH 63.8 PSIG PRESSURE NO VACUUM SETTING USING PRESSURE SPRING PAIR No 6104-0665 WITH FORTYT PRESSURE SEAL

MATERIAL MUST CONFORM TO ASME SA351 CF3M, ASTM A351 CF3M(YEAR DATE)

5.26 barg (76.3 psig) MAXIMUM SETTING

DESIGN CODE : ASME VIII DIV 1
 DESIGN PRESSURE (MAWP) : 5.2 barg (75 psig)
 SERVICE TEST PRESSURE : 10.1 barg (147 psig)
 MAX DESIGN TEMPERATURE : SEE TABLE 3
 MIN DESIGN TEMPERATURE : SEE TABLE 3

8	ORB337XX	PRESSURE O RING (SEE TABLE 2)	SEE TABLE	1
7	1860/19SL	FLANGED MAXI BODY MACHINING	316 STST 1.4408	1
6	1860/1070XXX	MAXI PRESSURE PLATE (SEE TABLE 1)	316 STST	1
5	1860/1008XX	TOP CAP MACHINING (SEE TABLE 1)	VARIOUS	1
4	176/2920	REMOVABLE GAUZE (SUPPLIED SEPARATE)	316L/304 STST	1
3	10978	STAINLESS PLUG	ST ST	1
2	610X-XXXX	SPRING PAIR (SEE TABLE 1)	17/7 ST	1
1	5121-001	3/16"BSW.3/16"LG SOCKETHEAD	304 STST	1
Index	Part Number	Description	Material	Qty



043/TXX0082S (PFA FORTYT)	ORB337F1	-55°C (-67° F)	260°C (500° F)
043/1XX0082S (FORTYT)	ORB337F0	-55°C (-67° F)	200°C (392° F)
PART NUMBER	PRESSURE 'O' RING	MIN TEMP	MAX TEMP

TABLE 2

TABLE 1

FORT VALE SALES@FORTVALE.COM WWW.FORTVALE.COM

ENGLAND, USA, CHINA
NETHERLANDS, SINGAPORE

© FORT VALE ENGINEERING LTD 2017. DO NOT SCALE- IF IN DOUBT ASK

UNLESS OTHERWISE STATED FIRST ANGLE PROJECTION MATERIAL: VARIOUS

X.X ±0.5	SURFACE FINISH 3.2um MAX	ISO9001:2008 REGISTERED FIRM: LRQ4007111	CHECKED DVN: 30182
X.XX ±0.25	CORNER RADII 0.8		
X.XXX ±0.125	CORNER CHAMFER 1.0 X 45°		
ANGLES ±0.5°	REMOVE ALL BURRS AND SHARP EDGES		

DESCRIPTION: 82.5mm BORE SLOTTED SUPERMAXI HIGHFLOW RV

TYPE: MK4 82.5mm SLOTTED FLANGED

SHEET 1 OF 1
DRAWN BY: D BAILEY DATE: 29-Jul-16
DRG.NO. 043/XXX0082S