

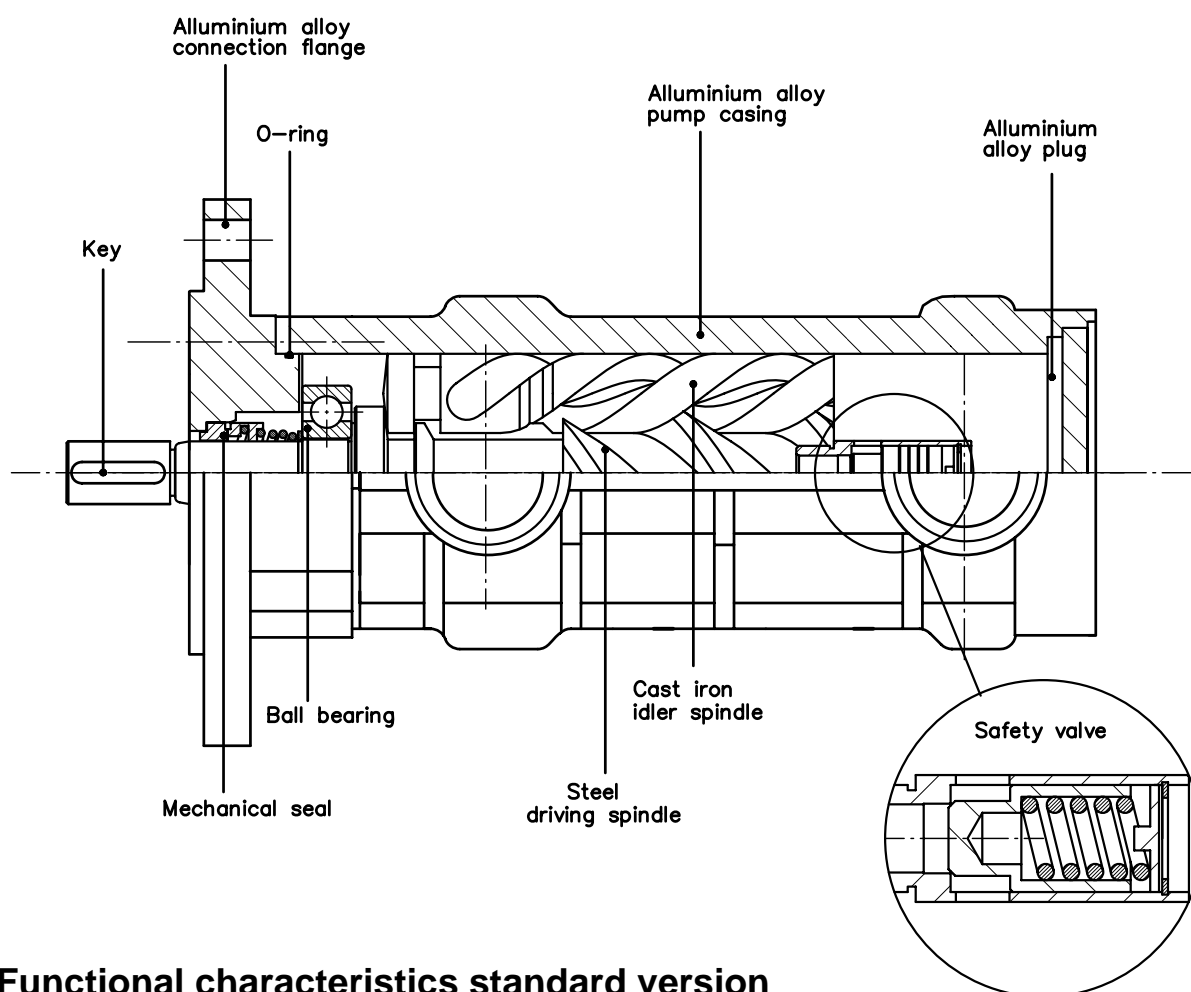
Screw pumps – PDA series with valve

For hydraulic oils, lubricating oils
 Admissible delivery pressure 10 bar
 Standard valve setting 6 bar

Main field of application:

Low pressure lubrication systems, auxiliary filtration systems, cooling systems

Section and components



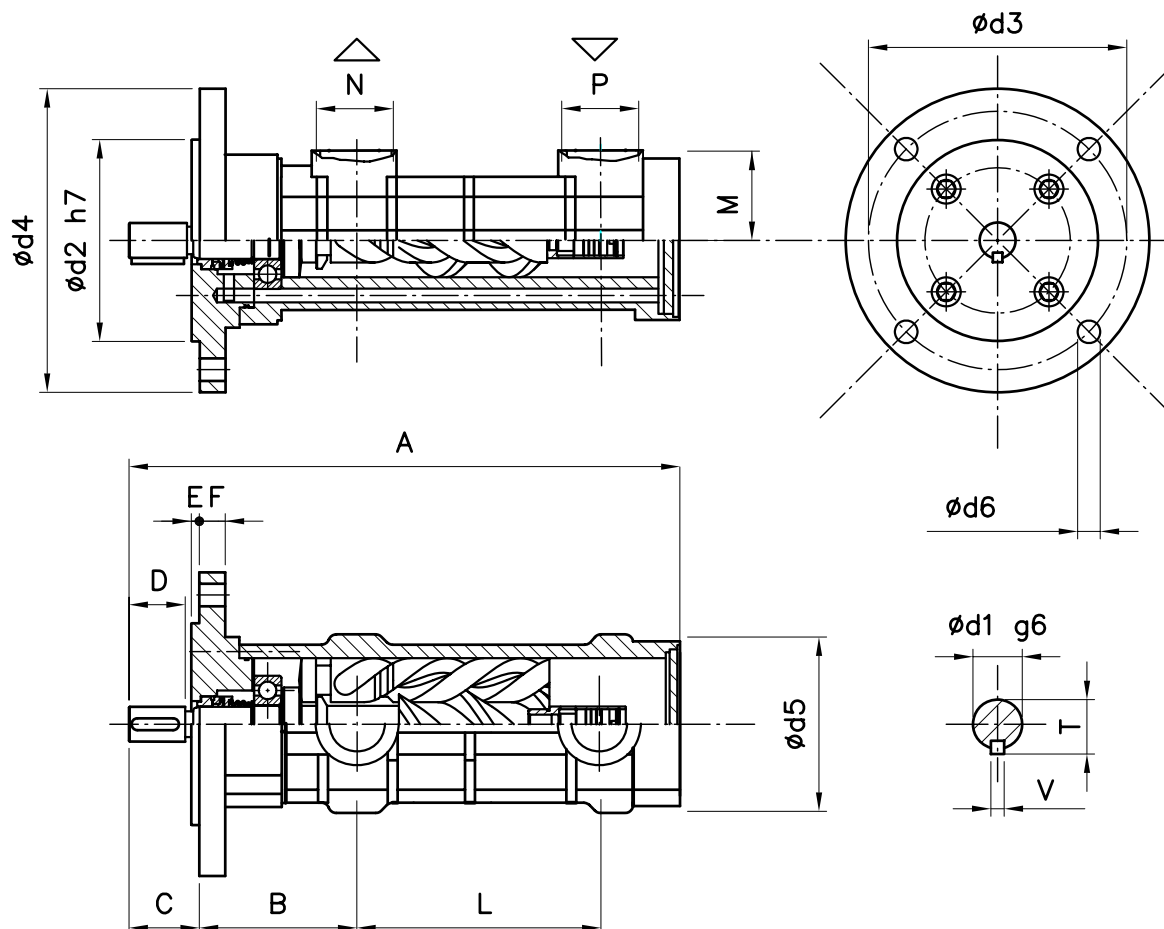
Functional characteristics standard version

Delivery flow	21 to 160 l/min (5,5 to 42,2 USGPM)	
Admissible delivery pressure*	up to 10 bar (145 psi)	
Admissible suction pressure	-0,4 to 2 bar (-5,8 to 29 psi)	For different values contact SEIM
Kinematics viscosity	20 to 400 cSt	For different values contact SEIM
Admissible temperature	0 to 100 °C (32 to 212 °F)	For different values contact SEIM
Driving speed	750 to 3600 rpm	
Average noise level	56 ÷ 62 dB(A) at 2900 rpm according to pump dimension	
Recommended filtration	60 micron max, suction side (not abrasive contaminant) ISO4406 19 / 16 – NAS 10	
Direction of rotation	clockwise, as seen from the driving side	

* Reduced pressure limits apply due to fluid viscosity and driving speed
 Consult the performance charts for the individual pump size
 For different functional characteristics, please contact our sales department

Screw pumps – PDA series with valve

For hydraulic oils, lubricating oils
 Admissible delivery pressure 10 bar
 Standard valve setting 6 bar



NF - STE - PDA - GB - 02.07 - 2

Dimensional chart (mm)

SIZE	A	B	C	D	E	F	L	M	N	P	T	V	d1	d2	d3	d4	d5	d6
									GAS									
PDA029#2..01.	286	82	42	37	5	14	122	44	1"	1"	21,5	6	19	100	125	150	95	11
PDA032#2..01.																		
PDA040#2..01.	307	82	42	37	5	14	140	48	1¼"	1¼"	21,5	6	19	100	125	150	95	11

SEIM srl
 Via A. Volta 17
 20090 Cusago (MI) ITALY
 Tel. (+39) 02.90.39.21.1
 Fax (+39) 02.90.39.21.41
 e-mail: seim@seim.it

www.seim.it