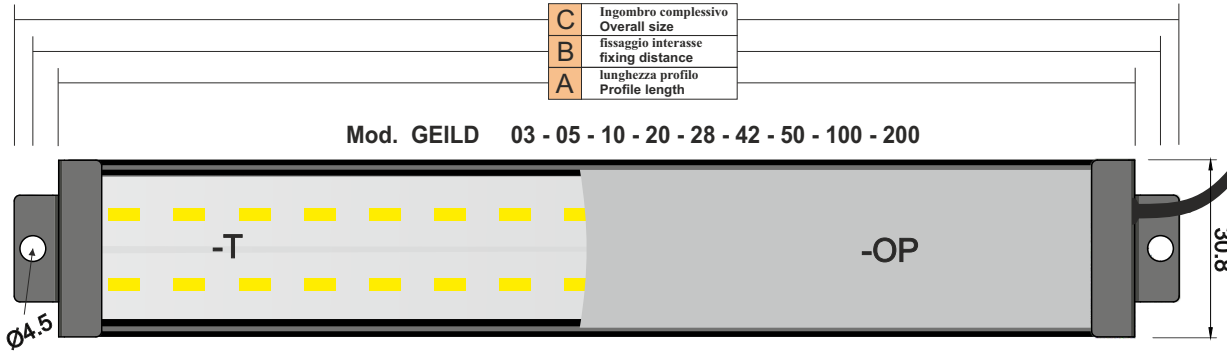
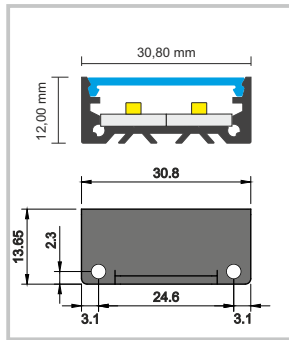
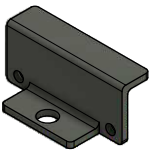


# GEILD Lamps

Mod. GEILD	Lunghezza Length	N° Led	Moduli base integrati 6 led Standard modules 6 integrated Led	Tensione alimentazione Supply voltage	Corrente alimentazione Supply current	Potenza assorbita Power consumption	Flusso lum. generata tipica Typical luminous flux	illuminazione tipica a 50cm Typical 50 cm Lighting	Range temperatura lavoro Working temperature range
GEILD03-6K-T GEILD03-6K-OP	03 cm.	12	2 ( GE411 )	24Vdc +/- 10%.	140 mA	3,2 W	480 lumen	480 lux 200 lux	Da -35(no frost ) a +55°C
GEILD05-6K-T GEILD05-6K-OP	05 cm.	24	4 ( GE411 )		170 mA	4,0 W	600 lumen	500 lux 360 lux	
GEILD10-6K-T GEILD10-6K-OP	10 cm.	12	2		170 mA	4,0 W	600 lumen	500 lux 360 lux	
GEILD20-6K-T GEILD20-6K-OP	20 cm.	24	4		370 mA	8,0 W	1200 lumen	960 lux 680 lux	
GEILD28-6K-T GEILD28-6K-OP	28 cm.	36	6		500 mA	12,0 W	1800 lumen	1420 lux 980 lux	
GEILD42-6K-T GEILD42-6K-OP	42 cm.	60	10		850 mA	20,4 W	3060 lumen	2160 lux 1500 lux	
GEILD50-6K-T GEILD50-6K-OP	50 cm.	72	12		1000 mA	24,0 W	3600 lumen	2500 lux 1940 lux	
GEILD100-6K-T GEILD100-6K-OP	100 cm.	144	24		2000 mA	48,0 W	7200 lumen	3640 lux 2400 lux	
GEILD200-6K-T GEILD200-6K-OP	200 cm.	288	48		4000 mA	96,0 W	14400 lumen	3900 lux 2860 lux	

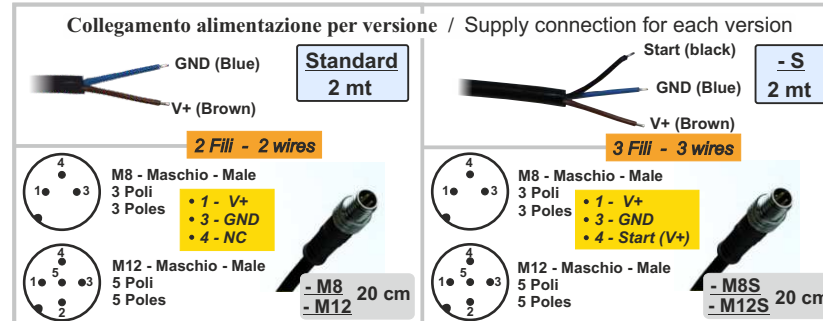
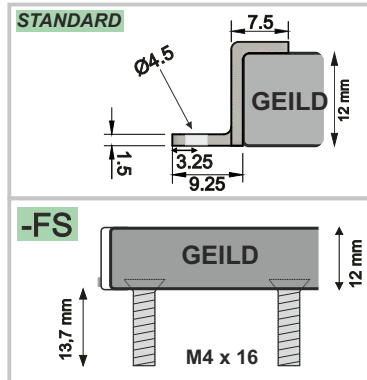
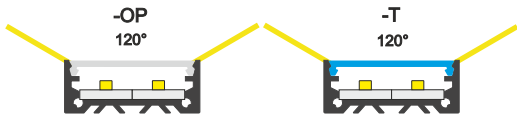


Fissaggio integrato  
Integrated Fixing



Mod.	A (mm)	B (mm)	C (mm)
GEILD03	30	44	50,5
GEILD05	50	64	70,5
GEILD10	100	114	120,5
GEILD20	200	214	220,5
GEILD28	280	294	300,5
GEILD42	420	434	440,5
GEILD50	500	514	520,5
GEILD100	1000	1014	1020,5
GEILD200	2000	2014	2020,5
GEILDXXX	Lunghezze custom Custom Lengths		

Apertura illuminazione  
Beam Angle



Genesi LUX® a division of  
Genesi Elettronica srl



# GEILD Options

Ex. Code :GEILDXXX-YY-CCC-WW1-WW2-WW3

**Lampada Led / Led lamp**

- Alimentazione: 24 Vdc Supply: 24Vdc
- Grado di protezione: IP65 Protection degree: IP65
- Uso illuminazione / lighting Use
- Illuminatore sistemi ispezione con telecamere illuminator for vision systems with cameras

GEILD Code			
Lunghezza lampada Lamp length	Colore Led Led Colour	Corrente per Led Current per Led	Varianti e opzioni Variants and options
XXX	YY	CCC	WW1-WW2-WW3

-WW1 Varianti coperture Lampada Cover Lamp variants	
-T	Copertura Trasparente apertura Transparent cover 120° beam angle.
-OP	Copertura Opalina apertura Opaline cover 120° beam angle.

Lunghezza lampada Lamp length	
GEILD03	03 cm
GEILD05	05 cm
GEILD10	10 cm
GEILD20	20 cm
GEILD28	28 cm
GEILD42	42 cm
GEILD50	50 cm
GEILD100	100 cm
GEILD200	200 cm
GEILDXXX	custom

Colori Colours	
-6K <i>STANDARD</i>	Bianco freddo 6000K 6000K Cold white
-4K	Bianco Naturale 4000K 4000K Natural white
-3K	Bianco Caldo 3000K 3000K Warm white
-UV365	Ultravioletto 365nm 365nm Ultraviolet
-UV385	Ultravioletto 385nm 385nm Ultraviolet
-YY	Custom IR / UV / COLOR

Corrente per Led Current per led	
- <i>STANDARD</i>	85mA per Led 85mA per Led
-CC	Led con pilotaggio diretto in corrente Led with direct driving current
-20	20mA per Led 20mA per Led
-40	40mA per Led 40mA per Led
-120	120mA per Led 120mA per Led
-300	300mA per Led uso impulsivo 300mA per Led impulsive use T ON max 1/10
-CCC	custom

-WW2 Varianti Lampada Lamp variants	
-FS	Fissaggio Sotto - Rear fixing

-Ww3 Collegamento alimentazione per versione Supply connection for each version	
- <i>STANDARD</i>	Versione standard cavo 2 poli 2mt standard version with 2mt 2-poles cable
-M8	Versioni -M8 conn. M8 3 poli Maschio cavo 20cm -M8 versions M8 3-poles 20 cm male cable
-M12	Versioni -M12 conn. M12 5 poli Maschio cavo 20cm -M12 versions M12 5-poles 20 cm male cable
-S	Ver. -S (Start/Strobe) Max. current driving of 10mA, 3poles 2Mt Cable
-M8S	Ver. -M8S (Start/Strobe) Max. curr. driving of 10mA, M8 3poles 20cm Male Cable
-M12S	Ver. -M12S (Start/Strobe) Max. curr. driving of 10mA, M12 5poles 20cm Male Cable
-5M	cavo 2 poli 5mt / 5mt 2 poles cable
-5MS	cavo 3 poli 5mt / 5mt 3 poles cable
-WW	Versioni custom Custom versions

Si garantisce il grado IP segnalato se il prodotto viene montato rivolto verso il basso

The indicated IP protection degree is guaranteed only if the product is positioned downward

Su richiesta disegni meccanici 3D  
3D mechanical drawings on request



NORMATIVE / STANDARDS		
Immunità elettromagnetica - EMC immunity :	EN 61547:2009	
Emissione elettromagnetica - EMC emission :	EN 55015:2013 + A1	
Rischio fotobiologico - Photobiologic risk :	EN 62471:2008 GLS: RISK EXEMPT	Only for white light, continuous use
Assessment of lighting equipment related to human exposure to electromagnetic fields	EN 62493:2015	

**ATTENZIONE / WARNING**

- Prodotto elettrico per uso professionale, può essere installato solo da personale qualificato.  
Electrical device exclusively for professional use. Installation can be done by qualified personnel only.
- In caso di danneggiamento del cavo di alimentazione, la sostituzione del medesimo deve essere eseguita esclusivamente presso la casa madre.  
In case of power supply wire damage, its replacement has to be done at the head office exclusively.

Perdita di GARANZIA a causa di uso improprio e manomissione del prodotto.  
Warranty loss in case of inappropriate use and tampering.

Genesi Elettronica srl  
V. Bachelet, 3 - 41057 Spilamberto - MODENA -  
Tel. 059785566 - info@genesi-lux.it - www.genesi-lux.it

Organization with a certified ISO 9001:2015 Quality Management System