

Part number:

**006-10675**

**HYDROMA**

HYDRAULICKÉ SYSTÉMY

**HIDROMA  
SYSTEMS**

UKŁADY HYDRAULICZNE

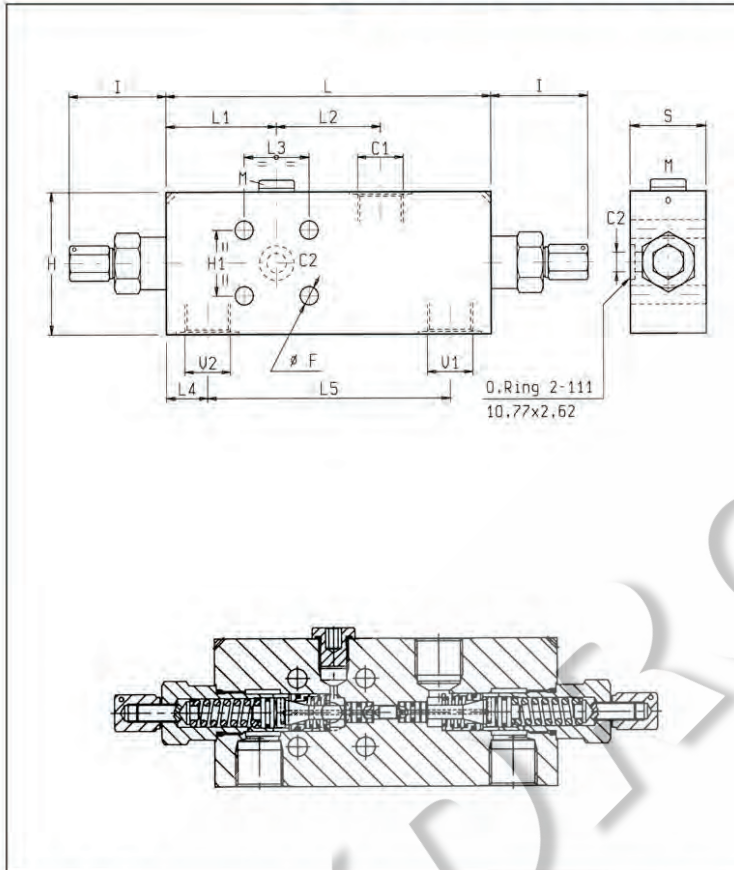
**HYDROMA**

ГИДРАВЛИЧЕСКИЕ СИСТЕМЫ

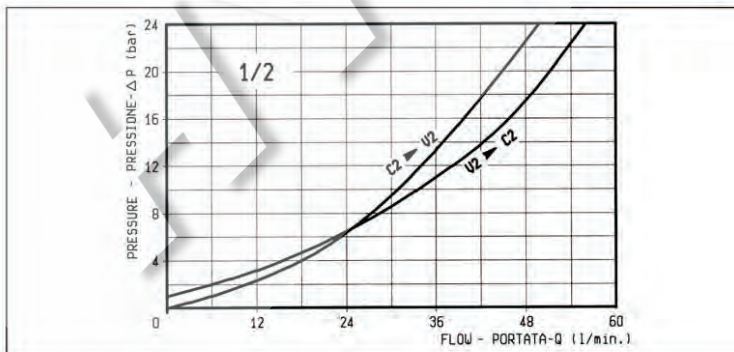
**BILANCIAMENTO, DOPPIO EFFETTO, SERIE "30", FLANGIABILI  
DUAL PILOT ASSISTED, SERIES "30", FLANGEABLE  
OVERCENTRE**

**A-VBSO-DE-30-CSL-FC1**

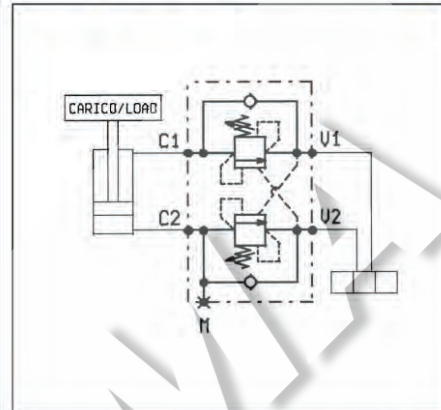
**08.44.30 - X - Y - Z**



34.5	30	65	45	112	19.5	30	47	52	151	8.5							1/2	2.2	
29.5	30	55	45	112	19.5	30	48	51.5	151	8.5								3/8	1.7
<b>S</b>	<b>H1</b>	<b>H</b>	<b>I</b>	<b>L5</b>	<b>L4</b>	<b>L3</b>	<b>L2</b>	<b>L1</b>	<b>L</b>	<b>F</b>							<b>Y</b>	Resoly Weight kg	



<b>Z</b>	<b>MOLLE / SPRINGS</b>				
	Campo taratura min - max bar Adj. press. range bar	Incremento press. bar / giro vite Press. increase bar / turn	Taratura standard bar (Q = 5 l/min) Std. setting bar (made at = 5 l/min)	Cod. ordinazione Ordering code	Colore Colour
<b>35</b>	100-350	138	350	03.51.01.171	giallo yellow



<b>DATI TECNICI / TECHNICAL DATA</b>	
Pressione max. Max. pressure	350 bar
Portata max. Flow max.	60 l/min
Taratura della valvola: almeno 1.3 volte superiore alla pressione indotta dal carico Pressure setting: at least 1.3 times the load induced pressure.	
Con fori per piombatura a filo With holes for wire-locking	
Collettore in acciaio Steel body	

<b>X</b>	<b>RAPPORTO DI PILOTAGGIO PILOT RATIO</b>
<b>03</b>	4.2 : 1

<b>Y</b>	<b>ATTACCHI / PORT SIZE</b>		
	V1-V2-C1	C2	M
<b>02</b>	G 3/8	∅ 9	G 1/4
<b>03</b>	G 1/2	∅ 9	G 1/4