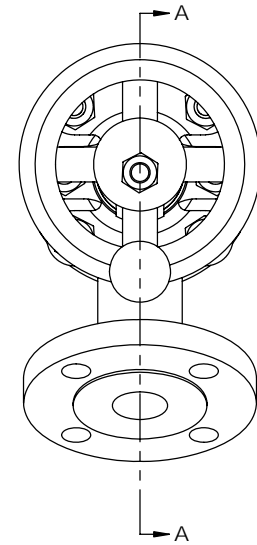


SECTION A-A

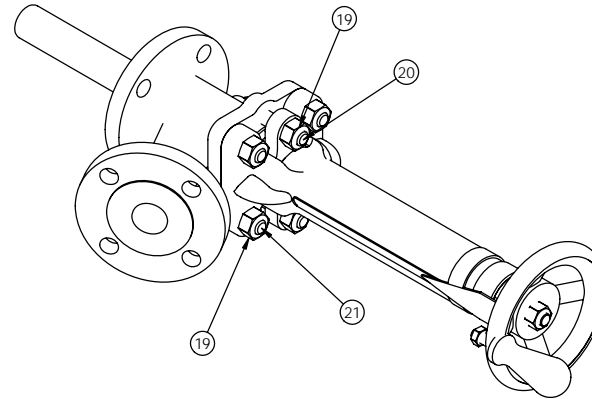


ITEM No.	DESCRIPTION	MATERIAL
*11	PISTON	316SST
!2	BODY	316SST
*13	INLET RING	TEFLON
!4	CAGE	316SST
!5	CAGE LOCK	316SST
*16	CAGE LOCK GASKET	RTFE
*7	GLAND RING	LAMINAR
*8	SPLIT NUT	316SST
9	GLAND	304SST
10	BONNET	304SST
*11	STEM	416SST
13	BONNET BUSHING	303 SST
14	HANDWHEEL	CAST IRON
15	HANDWHEEL NUT	304SST
16	TURN KNOB	316SST
17	TURN KNOB NUT	304SST
18	OPENING INDICATOR	304SST
19	HEX NUT	316SST
20	GLAND STUD	304SST
21	BONNET STUD	304SST
*	RECOMMENDED SPARES	
!	WETTED PARTS	

**\* NOTE \***

1. DRILLING FLANGES MEET ANSI STANDARD. BOLT HOLES STRADDLE CENTERLINE.
2. ALL VALVES HYDROSTATICALLY SEAT & SHELL TESTED TO ANSI B16.34.
3. FLANGE FACING FINISHES MEET THE REQUIREMENTS OF ANSI B16.5, 125-250 AARH STANDARD.
4. IF THE DRAIN VALVE IS NOT USED WITH A STRAHMAN ADAPTER, NOZZLE OR INSERT OR THE MATING NOZZLE DOES NOT PROVIDE A PILOTING RECESS, THE NOZZLE BORE MUST BE 1/4" LARGER THAN THE PISTON DIAMETER.
5. **CAUTION** WHEN A STRAHMAN ADAPTER IS NOT SUPPLIED WITH A DRAIN VALVE, OR CUSTOMER'S NOZZLE DOES NOT HAVE A RECESS FOR PILOTING VALVE, NOZZLE BORE MUST BE PISTON DIAMETER + 1/4" TO PREVENT PISTON FROM SCORING ON THE INSIDE OF NOZZLE & THEREBY CAUSING POSSIBLE LEAKAGE.
6. PISTON EXTENSION IS MEASURED FROM A 1/16" RAISED FACE.

450 F MAXIMUM OPERATING TEMPERATURE WITH TEFLON RINGS.



UNLESS OTHERWISE NOTED  
TOLERANCES ARE:  
± 1/64 FRACTIONS  
± .005 3 PLACE DECIMALS  
± .01 2 PLACE DECIMALS  
± 0°30' ANGLES

REV	DESCRIPTION	BY	CKD	DATE
<b>Strahman</b> VALVES, INC. BEIHLHEIM, PA.				
<b>1" HAND OPERATED DRAIN VALVE</b>				
PRESSURE: 300 PSI		ENGINEER: E. LISKANICH		
SCALE: NTS		CHECKED BY: J. MALLEY		
SIZE: D		DATE: 05/18/2009		
SHEET 1 OF 1		DWG. NO.: D015857		