

PROCENTEC



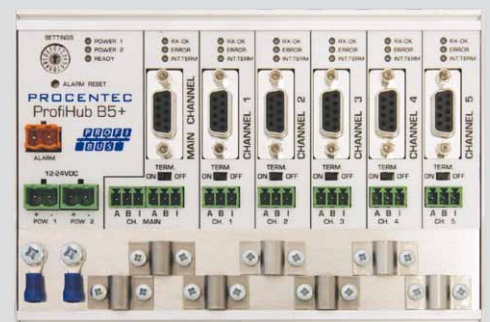
ProfiHub B5+R

5 Channel PROFIBUS Hub with redundancy option

The ProfiHub B5+R is an easy and robust network component to design reliable, flexible and object oriented networks. It allows wide-ranging star/tree segments and long spur lines for PROFIBUS DP installations in IP 20 environments. The ProfiHub B5 is essential to obtain better control during maintenance and upgrading of the network. The use ProfiHub results in lower operational costs and the optimization of the entire production process.

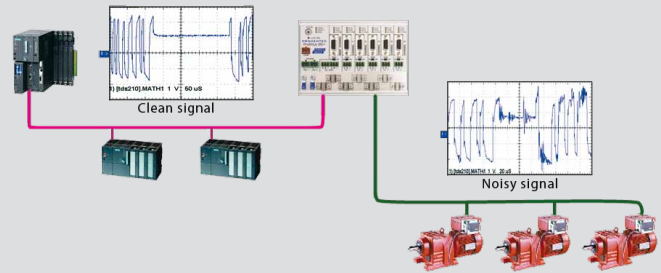
The ProfiHub B5+R is a perfect economic solution to bridge user's requirements and creates reliable star networks in RS 485 networks.

To save costs on plugs and offer flexibility, it contains screw terminals as well as DB9 connectors. The DB9 connectors are also perfect measurement points for ProfiTrace to quickly measure all segments. If bus redundancy is enabled, two segments will form a redundant pair. This creates an even more reliable network. An alarm contact is linked to events based on the status of the power supply and the bus redundancy if this is enabled.



Application areas

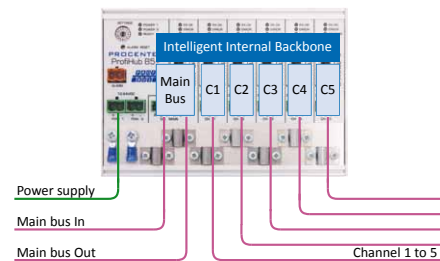
- Dynamic spur lines to devices
- Star, tree and bus structured networks
- Removable drives and motors
- Pull/Plug motor control centers
- EMC sensitive applications
- Barrier for non-galvanic isolated equipment



Example of the barrier function of the ProfiHub. Noise and EMC disturbances will not affect the backbone or the other channels.

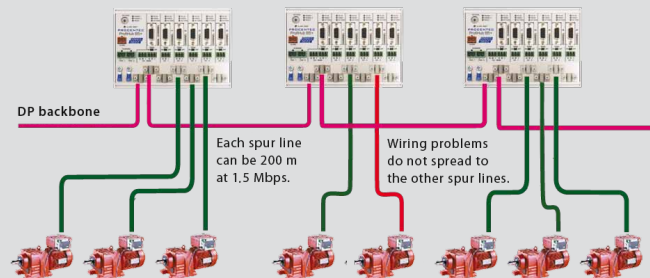
Your benefits

- Hot slave insertion/removal during operation
- Short circuit protection on each channel
- Compact and robust construction
- Screw terminals and DB9 connectors can be mixed
- Conveniently arranged networks
- Extendable installations
- Cost saving



Product features

- 5 Isolated channels
- Transparent for all PROFIBUS DP protocols in Hub
- Suitable for PROFIsafe and MPI in Hub
- 31 Devices per channel
- Max. 1200 m spur line length (depends on baudrate)
- 9.6 Kbps - 12 Mbps selectable per channel
- Screw terminals and DB9 connectors
- Configurable grounding system
- Integrated termination facilities
- IP 20 classification
- Redundant power supply
- Bus redundancy option in Hub mode



Example of dynamic spur lines to instruments. The devices can be added and removed during operation.

