

HEAVY LATCH SERIES



DOUBLE ROD SERIES (HEAVY PERFORMANCE)

The sizes of this series are also produced in stainless steel and are shown below in red.

Material: Hot-stamped, weldable, black varnished steel or hot-stamped **AISI 304 stainless steel**.

Pivot: Hardened, ground and knurled steel to prevent rotation.

Bar, swinging pivot and nuts: Galvanized steel or **AISI 303 stainless steel**

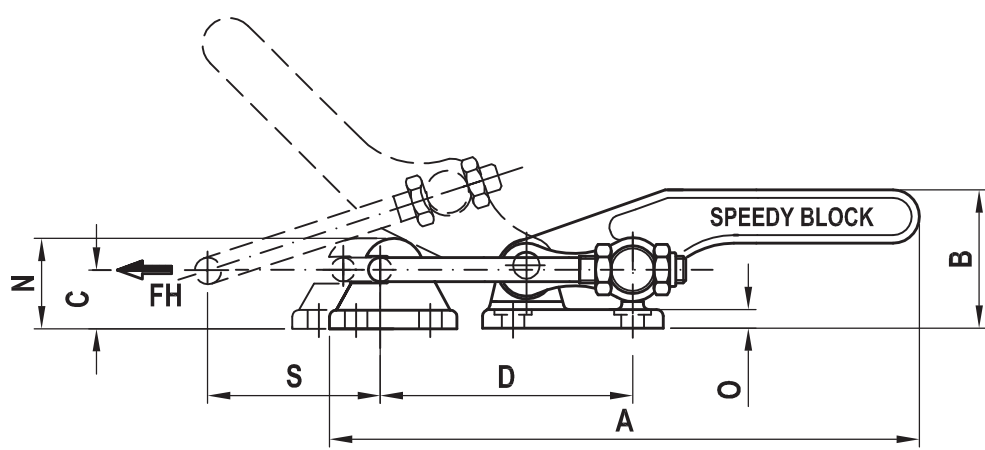
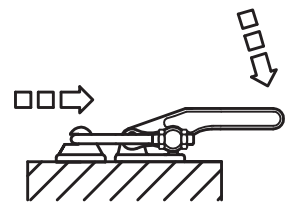
Performance: The tool comes with a double rod, bracket and nuts.

Features and applications: The tools of this series ensure a perfect closing of lids. The construction features and materials chosen make these tools highly resistant.

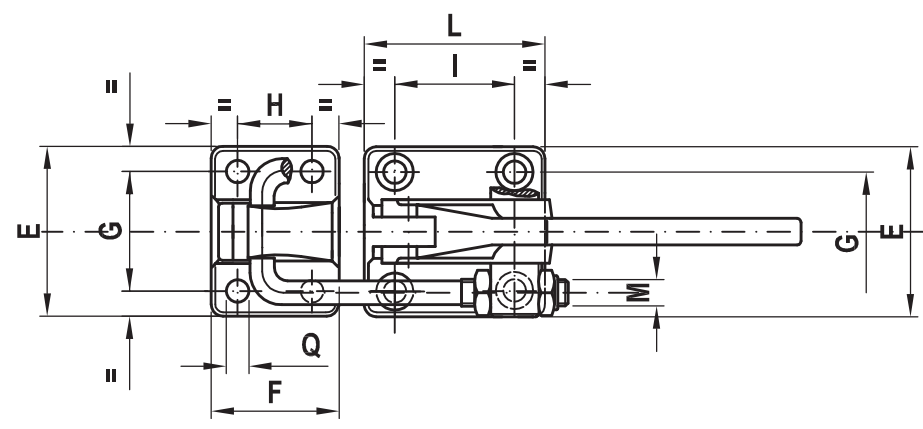
The support base is parallel to the force line of action.

In the closed position, the control lever is parallel to the support base.

A special grease is placed between two contacting surfaces during assembly.



FORM T2



Code	Description	Stainless steel Code	Stainless steel	A	B	C	D	E	F	G	H	I	L	M	N	O	Q	S	Fh (daN)	FhX (daN)	gr.
AL600	1400/T2	AS580	1400/T2X	220	52	21	93÷105	64	48	45	28	45	68	M10	34	7	8,5	63	1700	1400	1110
AL610	2800/T2	AS585	2800/T2X	273	65	27	113÷123	80	60	57	35	57	85	M12	42	9	10,5	78	4000	3000	2070



DOUBLE ROD SERIES WELDABLE (HEAVY PERFORMANCE)

The sizes of this series are also produced in stainless steel and are shown below in red.

Material: Hot-stamped, weldable, black varnished steel or hot-stamped **AISI 304 stainless steel**.

Pivot: Hardened, ground and knurled steel to prevent rotation

Bar, swinging pivot and nuts: Galvanized steel or **AISI 303 stainless steel**

Performance: The tool comes with a double rod, bracket and nuts.

Features and applications:

The tools of this series ensure a perfect closing of lids.

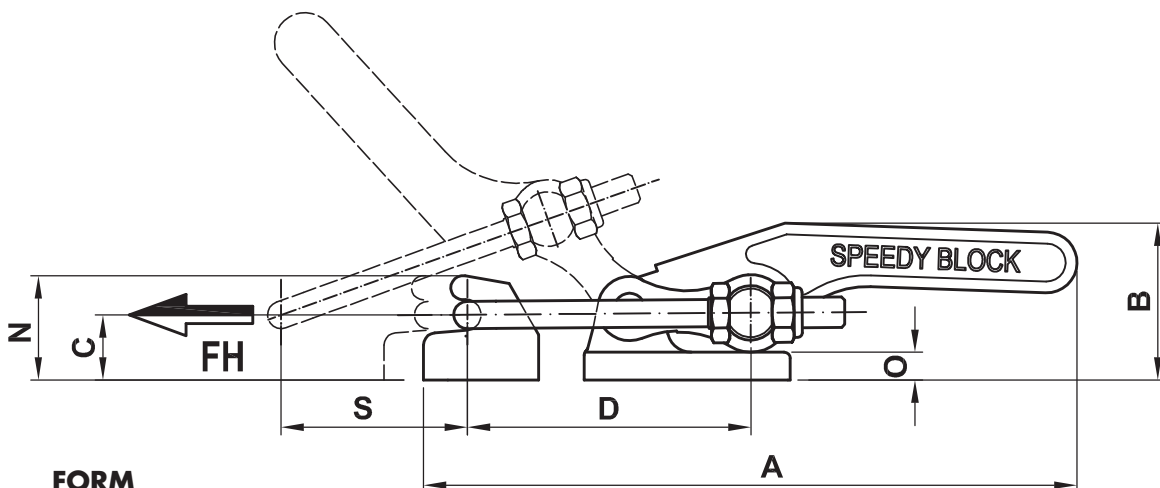
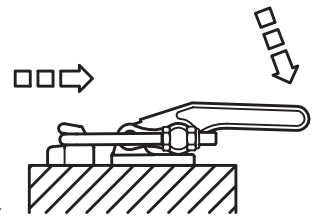
The shape of the base plate and the hooking bracket are made in a way so that they can be easily welded to the tool to be used.

The construction features and materials chosen make these tools highly resistant.

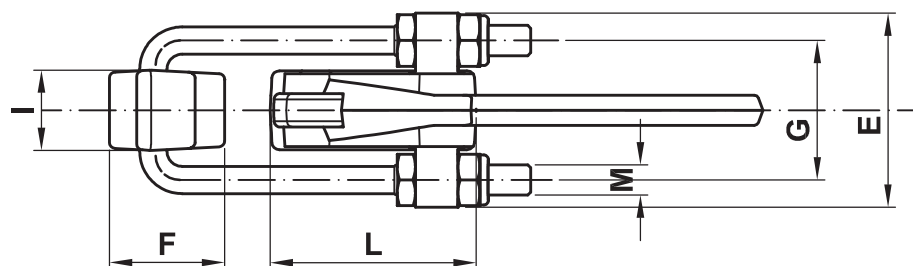
The support base is parallel to the force line of action.

In the closed position, the control lever is parallel to the support base.

A special grease is placed between two contacting surfaces during assembly.



**FORM
T2S**



Code	Description	Stainless steel Code	Stainless steel	A	B	C	D	E	F	G	I	L	M	N	O	S	Fh (daN)	FhX (daN)	gr.
AL620	1400/T2S	AS590	1400/T2SX	216	52	21	93÷105	64	38	46	26,5	68	M10	34,5	9,2	63	1700	1400	930
AL630	2800/T2S	AS595	2800/T2SX	257	65	27	102÷123	80	50	55	32	80	M12	43	12,7	78	4000	3000	1708